

Port Hueneme

Waterbody: Hueneme Drain (tributary to Pacific Ocean)

Location: Pedestrian bridge 200 yds. downstream Surfside Dr. (34° 8'29.30"N, 119°11'21.09"W)

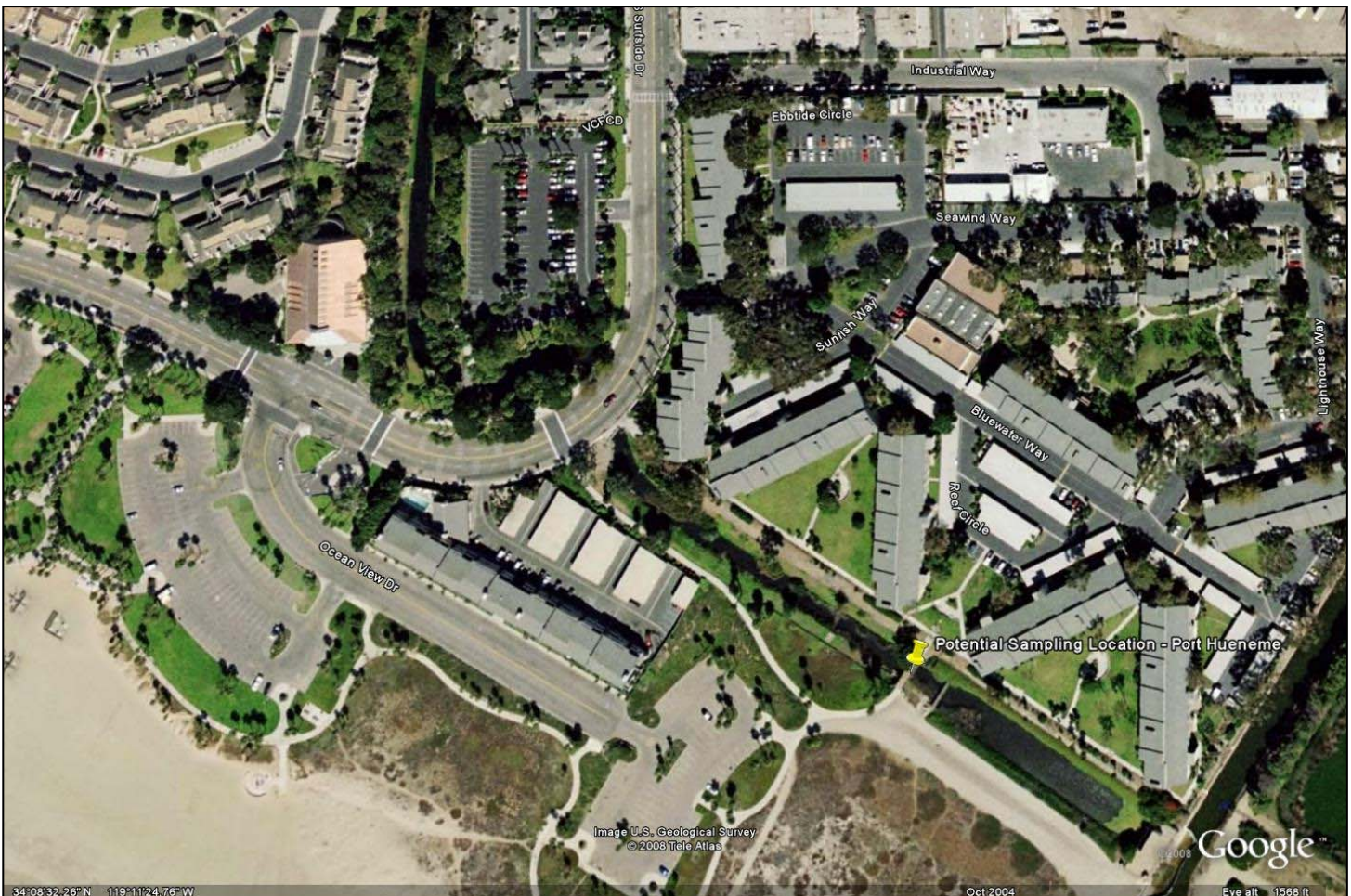
Pros: Grass-covered sides fairly stable

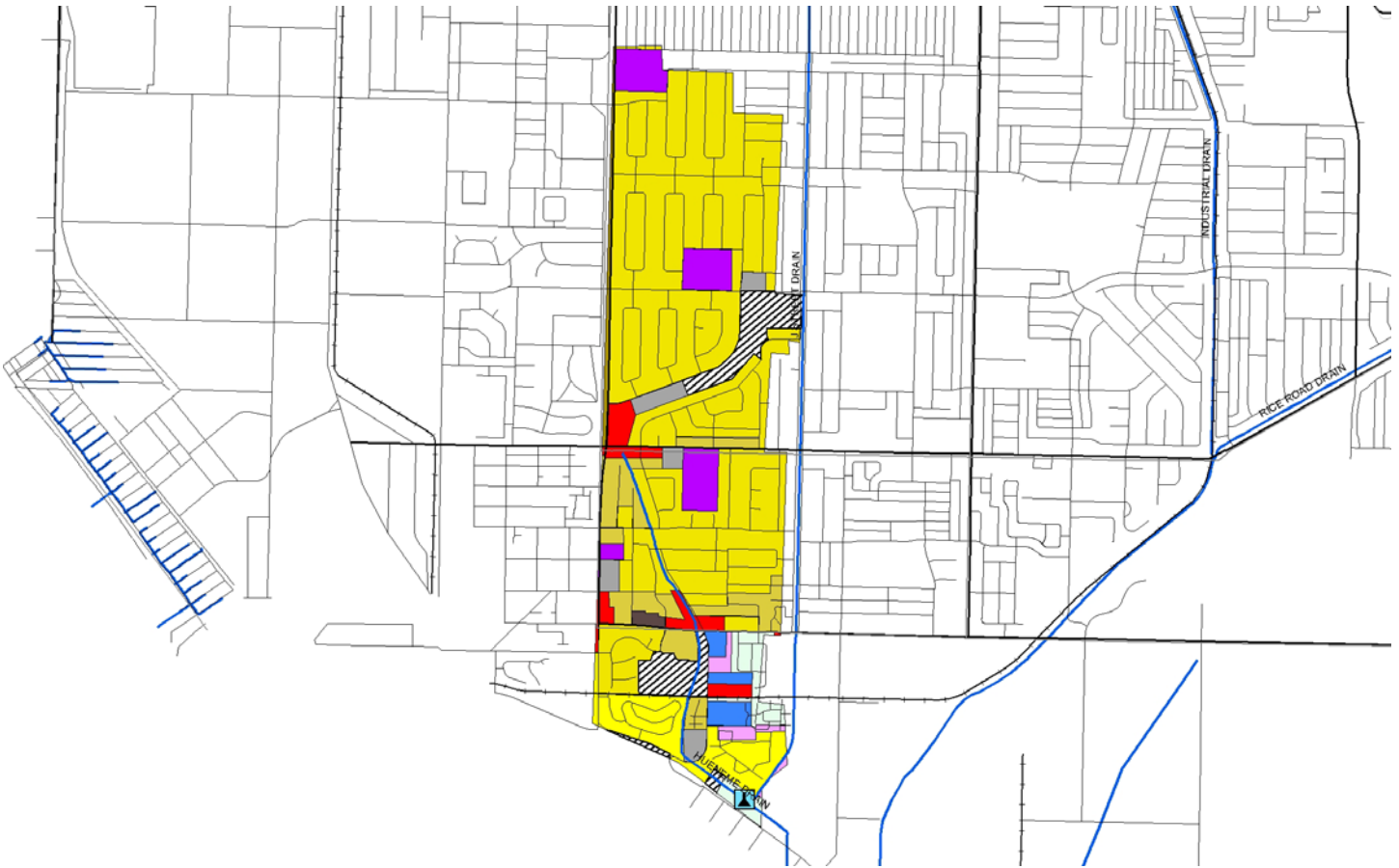
Cons: Lots of activity nearby, high potential for vandalism, stagnant water

Outstanding Site Selection Tasks: Verify positive flow

Other Potential Sites: At Surfside Rd. at lower end of Bubbling Springs Park

Dry Season Flow Potential: Likely year-round flow due to urban runoff and groundwater contribution





Entire City

| Land Use | Acres | % of Total Watershed |
|-------------------------|---------------|----------------------|
| Commercial | 105.4 | 3.7% |
| Facility | 20.4 | 0.7% |
| Industrial_1 | 32.5 | 1.1% |
| Industrial_3 | 34.9 | 1.2% |
| Military_2 | 1558.4 | 54.0% |
| No Info Given | 53.7 | 1.9% |
| Recreation | 38.5 | 1.3% |
| Res.2 | 308.3 | 10.7% |
| Res.3 | 432.9 | 15.0% |
| Res.4 | 104.3 | 3.6% |
| Schools | 41.6 | 1.4% |
| Transportation | 29.7 | 1.0% |
| Under Construction | 2.1 | 0.1% |
| Utilities | 6.0 | 0.2% |
| Vacant Undifferentiated | 35.4 | 1.2% |
| Water | 83.6 | 2.9% |
| Totals | 2887.9 | 100.0% |

Selected Subwatershed

| Land Use | Acres | % of Total Watershed |
|-------------------------|--------------|----------------------|
| Commercial | 19.2 | 3.3% |
| Facility | 15.1 | 2.6% |
| Industrial_3 | 10.0 | 1.7% |
| Military_2 | 5.7 | 1.0% |
| No Info Given | 35.8 | 6.1% |
| Res.2 | 45.5 | 7.7% |
| Res.3 | 359.1 | 60.9% |
| Res.4 | 40.9 | 6.9% |
| Schools | 32.6 | 5.5% |
| Under Construction | 2.1 | 0.4% |
| Utilities | 6.5 | 1.1% |
| Vacant Undifferentiated | 16.8 | 2.9% |
| Totals | 589.4 | 100.0% |